

DataSheet

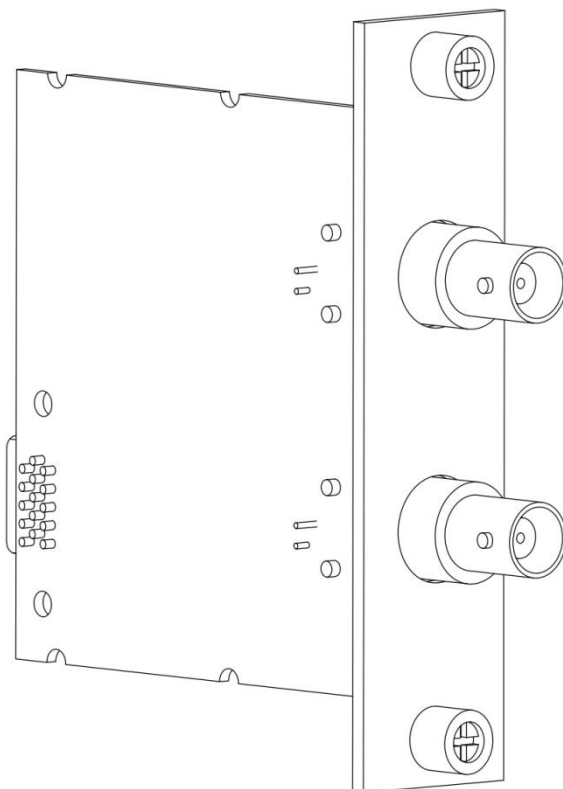
MT-E744

2 AI, ± 10 V, 32 Bit, AC/DC Coupling, IEPE AC Coupling

This document contains the specifications for MT-E744. Specifications are typical at 25°C unless otherwise noted.



Caution Using the MT-E744 in a manner not described in this document may impair the protection the MT-E744 provides.



MT E Series Overview



MT provides more than 20 E Series modules for measurement, control, and communication applications. E Series modules can connect to any sensor or bus and allow for high-accuracy measurements that meet the demands of advanced data acquisition and control applications.

- Measurement-specific signal conditioning that connects to an array of sensors and signals
- Isolation options such as bank-to-bank, channel-to-channel, and channel-to-earth ground
- -40 °C to 70 °C temperature range to meet a variety of application and environmental needs
- Hot-swappable

The majority of E Series modules are supported in both RobustRIO and FlexDAQ platforms and you can move modules from one platform to the other with no modification.

RobustRIO



RobustRIO combines an open-embedded architecture with small size, extreme ruggedness, and E Series modules in a platform powered by the Redefinable I/O (RIO) architecture. Each system contains an FPGA for custom timing, triggering, and processing with a wide array of available modular I/O to meet any embedded application requirement.

FlexDAQ

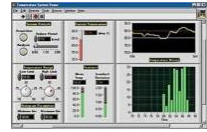
FlexDAQ is a portable, rugged data acquisition platform that integrates connectivity, data acquisition, and signal conditioning into modular I/O for directly interfacing to any sensor or signal. Using FlexDAQ with LabVIEW, you can easily customize how you acquire, analyze, visualize, and manage your measurement data.



Software

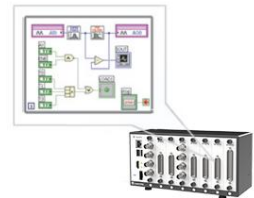
LabVIEW Professional Development System for Windows

- Use advanced software tools for large project development
- Use advanced measurement analysis and digital signal processing
- Take advantage of open connectivity with DLLs, ActiveX, and .NET objects
- Build DLLs, executables, and MSI installers



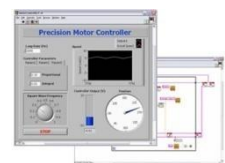
LabVIEW FPGA Module

- Design FPGA applications for MT RIO hardware
- Program with the same graphical environment used for desktop and real-time applications
- Execute control algorithms with loop rates up to 300 MHz
- Implement custom timing and triggering logic, digital protocols, and DSP algorithms
- Incorporate existing HDL code and third-party IP including Xilinx IP generator functions



LabVIEW Real-Time Module

- Design deterministic real-time applications with LabVIEW graphical programming
- Take advantage of built-in PID control, signal processing, and analysis functions
- Automatically take advantage of multicore CPUs or set processor affinity manually
- Take advantage of real-time OS, development and debugging support, and board support



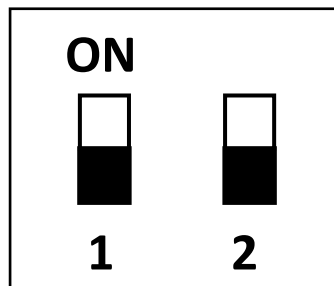
AC/DC Coupling

You can configure each channels in hardware for AC or DC coupling. For channels set to AC coupling, you can turn the the IEPE excitation current on or off.

MT E744 AC/DC Configuration

Configuration	Dial Switch	
	S1	S2
DC Coupling	ON	OFF
AC Coupling	OFF	OFF
AC Coupling with IEPE	OFF	ON

Example: E744 with DC Coupling



Input Characteristics

Number of channels	2 differential input channels
ADC resolution	32bits
Sampling mode	Simultaneous
Support Sample rate	204.8kS /s、192kS /s、102.4kS /s、96kS /s ...
Input coupling	AC/DC (Hardware-selectable)
Input range	±10V
AC voltage full-scale range	
Minimum	±10Vpk
Typical	±10.05Vpk
Maximum	±10.15Vpk
IEPE excitation current	
Minimum	2.0 mA
Typical	2.1 mA
IEPE compliance voltage	24V maximum
Crosstalk (1 kHz)	>110dB
Differential input impedance	22kΩ
Frequency response	±0.1dB@20Hz~20kHz
Total harmonic distortion(THD)	-115dB
Total harmonic distortion+Noise(THD+N)	-110dB

Table 1. AI Idle Channel Noise

Sample Rate (kS/s)	Idle Channel Noise	
	dBV _{rms}	uV _{rms}
48 kS/s	-117.9 dBV _{rms}	9 uV _{rms}
96 kS/s	-114.7 dBV _{rms}	13 uV _{rms}
192 kS/s	-112.3 dBV _{rms}	17 uV _{rms}

Table 2. Accuracy

Measurement Conditions		Percent of Reading (Gain Error)	Percent of Range (Offset Error)
Calibrated	Maximum (-40 °C to 70 °C)	0.034%	±0.014%
	Typical (25 °C ±5 °C)	0.007%	±0.005%

Power Requirements

Power consumption from chassis:	900mW maximum
---------------------------------	---------------

Thermal dissipation (at 70 °C)	930mW maximum
--------------------------------	---------------

Safety Voltages

Connect only voltages that are within the following limits:

Channel-to-earth ground	±30 V maximum, Measurement Category I
-------------------------	---------------------------------------

Isolation

Channel-to-channel	None
--------------------	------

Channel-to-earth ground	None
-------------------------	------

Measurement Category I is for measurements performed on circuits not directly connected to the electrical distribution system referred to as MAINS voltage. MAINS is a hazardous live electrical supply system that powers equipment. This category is for measurements of voltages from specially protected secondary circuits. Such voltage measurements include signal levels, special equipment, limited-energy parts of equipment, circuits powered by regulated low- voltage sources, and electronics.

CE Compliance

This product meets the essential requirements of applicable European Directives, as follows:

- 2014/35/EU; Low-Voltage Directive (safety)
- 2014/30/EU; Electromagnetic Compatibility Directive (EMC)
- 2014/34/EU; Potentially Explosive Atmospheres (ATEX)

Shock and Vibration

To meet these specifications, you must panel mount the system.

Operating vibration

Random (IEC 60068-2-64)	5 g _{rms} , 10 Hz to 500 Hz
Sinusoidal (IEC 60068-2-6)	5 g, 10 Hz to 500 Hz
Operating shock (IEC 60068-2-27)	30 g, 11 ms half sine; 50 g, 3 ms half sine; 18 shocks at 6 orientations

Environmental

Refer to the manual for the chassis you are using for more information about meeting these specifications.

Operating temperature	-40 °C to 70 °C (IEC 60068-2-1, IEC 60068-2-2)
Storage temperature	-40 °C to 85 °C (IEC 60068-2-1, IEC 60068-2-2)
Ingress protection	IP40
Operating humidity (IEC 60068-2-78)	10% RH to 90% RH, noncondensing Storage
humidity (IEC 60068-2-78)	5% RH to 95% RH, noncondensing Pollution
Degree	2
Maximum altitude	500m

Indoor use only.

Support

MT-RIO上手指南：

<http://server.mangotree.cn:9000/WebFile/Downloads/上手指南/MT-RIO/>



RIO上手指南

MT-RIO视频教程：

<http://server.mangotree.cn:9000/WebFile/Downloads/视频教程/MT-RIO/>



RIO视频教程

MT-Master上手指南：

<http://server.mangotree.cn:9000/WebFile/Downloads/上手指南/MT-Master/>



Master上手指南

MT-Master视频教程：

<http://server.mangotree.cn:9000/WebFile/Downloads/视频教程/MT-Master/>



Master视频教程

Dimensions:(mm)

